

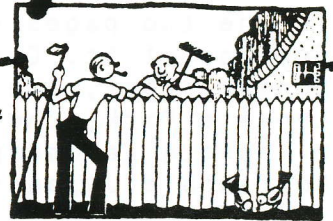


# The Garden Spray

BULLETIN OF THE MEN'S GARDEN CLUB OF MINNEAPOLIS, INC.

Member--Men's Garden Clubs of America • Minnesota State Horticultural Society

November 1990, Volume 48, Number 11



## MGCM NOVEMBER MEETING

WHERE? Lake Harriet United Methodist Church  
49th Street at Chowen Avenue South

WHEN? Tuesday evening November 13, 1990

TIME? 6 PM Dinner for \$6.00 Program 7 PM

## PROGRAM FOR NOVEMBER

LES DAY, Supervisor OF the COMO PARK CONSERVATORY in St. Paul, who recently attended the Professional Plant Grower's Association Annual Meeting in Colorado, will be our featured speaker this month.

His TOPIC will be:

## A COMPARISON/CONTRAST OF MAJOR CONSERVATORIES

Les will show slides and will update us on the Como Park Conservatory and related projects.

\* \* \* \* \*

If you aren't on the permanent reservation list GET YOUR RESERVATION TO JOE STENGER, 5421 GIRARD AVE. S., MPLS., 55419 NOW. Again you have the privilege of addressing the card yourself.



# Happy Thanksgiving

FRAGRANCE GARDEN RECEIVES NATIONAL PUBLICITY

MGCM's Community Garden was one of ten Minneapolis/St. Paul gardens cited in the October issue of Flower & Garden magazine's ten page section on Great Garden Cities to Visit. The other cities were Charleston, Philadelphia, Portland (Oregon), and San Antonio.

In the two pages devoted to Minneapolis/St. Paul one learns about the College of St. Catherine, the Community Fragrance Garden, the Como Park Conservatory, the Eloise Butler Wild Flower Garden and Bird Sanctuary, Lyndale Park, the Minneapolis Sculpture Garden and Cowles Conservatory, the Minnesota Landscape Arboretum, the Noerenberg Memorial County Park, the Normandale Japanese Garden and the University of Minnesota St. Paul campus.

The paragraph devoted to our MGCM project reads

Community Fragrance Garden, built and maintained by the Minneapolis Men's Garden Club, is also cared for by the Minneapolis Society for the Blind. Characteristics such as fragrance and texture determined the annuals, perennials, shrubs and conifers selected for this garden, designed in the interest of visually impaired individuals. The garden includes flowering crab apples, rhododendrons, shrub roses, scented geraniums, lilies and a variety of herbs. The garden is open year round as a public park. Located at 19th Street and Aldrich Avenue South in Minneapolis; there is no admission charge. Call 612/322-1821 for information.

THE EDITOR COMMENTS: That telephone number is Kent Petterson's. We wonder how many calls he got.

GARDEN UPDATE. Mary Maynard says the Fragrance Garden clean-up on Saturday October 20th went very well. About 15 or 20 members showed up at 8:00 and went to work at once although it seemed a shame to destroy the still flowering alyssum, petunias and snapdragons none of which had yet been frost damaged. There were no sun bathers to be seen but a frightened rabbit dashed across the plot. A drizzly rain started about 9:30 just as the clean-up was completed but it didn't stop the group from enjoying the doughnuts brought by Merle Pulley and the pop contributed by Kent Petterson.

\* \* \* \* \*

WE WELCOME NEW MEMBERS

Scotty R. O. Campbell      542-8744  
6900 Glenwood Ave.  
Golden Valley, MN 55427

Eric J. Kilberg              722-1387  
3556 Edmund Blvd.  
Minneapolis, MN 55406

Michael J. Corcoran        881-0785  
2253 Overlook Drive  
Bloomington, MN 55431

Clyde W. Thompson         922-1696  
4429 Dunham Drive  
Edina, MN 55435

Terry L. Robertson        521-0703  
3517 Orchard Avenue N.  
Crystal, MN 55422

\* \* \* \* \*

See the colored page for the Christmas party announcement.

YOU'RE INVITED

What: Annual wreath making at Klier's Nursery  
in south Minneapolis 5901 Nicollet Ave. S.

Who: All members, family and friends

When: 6:30 PM on Friday November 23rd

Provided: Green boughs and material will be for sale  
or bring your own, work space and helpful  
hints if needed, plus refreshments

Need: Wire cutters, pruners, and gloves

THE ART OF PRESSING GREAT CIDER

When the leaves turn color and start to fall and we have crisp air with the morning frost, it becomes the time in the fall to wheel out the old fashioned cider press.

Now almost anyone can make good cider, but to make great cider you have to have some ingenuity plus some knowlege of apple flavors. First as to flavors, early cider would be the sweet cider of Beacons (late August and early September). The MinJon gives a slightly tart cider during September. October gives you Firesides for sweet cider but also my favorite the tart flavor of the Haroldson.

For those of you who have been buying cider in the supermarket, forget it. There isn't any comparison between cider and that boiled apple juice.

Fresh cider must be tasted right out of the press to be at its peak flavor. This may be kept in the refridgerator up to seven days. Cider that has to be stored needs to be kept frozen and thawed for the occasion.

Now for the ingenuity part of the cider making. This comes from Mark Twain, tho not painting the fence is involved, its picking, washing, grinding, pressing and bottling that replaces the fence painting. Ingenuity - boy I must have a lot of it because not only do I get people to do it once, but they come back year after year to do all that work.

I must be ingenius or could it be that it really is a lot of fun and it is really is great cider.

## WERE YOUR GERANIUMS AFFECTED?

On an MGCM tour this summer evidence of geranium problems brought questions. Lloyd Bachman, responding, said a similar problem in California geranium fields some years ago nearly brought a nurseryman's boycott. At that time Dr. Leon Snyder advised using geraniums from seed instead of cuttings from the California cutting stock.

In following up a request from the SPRAY Lloyd contacted Dr. Frank F. Pflieger a plant pathologist at the U. of Minn. Dr. Pflieger sent a photocopy of a research paper reported in Plant Disease/May 1983 titled "A Leaf Spot of Florists' Geraniums Incited by *Pseudomonas cichorii*". Excerpts from the article follow.

### SYMPTOMS

Leaves. Foliar symptoms on geranium plants vary with weather conditions. When plants are exposed to rainfall, water-soaked dark brown to black irregular-shaped necrotic areas...develop. ... The entire leaf may become necrotic and curl when extensive infection occurs. Chlorosis develops in the tissues adjacent to lesions, usually after 2 days. ... Severly affected leaves abscise.

...When plants are exposed to dews, overhead watering, or occasional wetting sunken lesions...with tan centers that may be slightly raised develop on both leaf surfaces...The tan centers may be surrounded by a dark margin and a chlorotic halo. The halo may be as wide as the diameter of the lesion or may be very small...on a young leaf spot....

Frequently, infection occurs only on leaf margins....causing cupping and distortion as the leaf grows. Marginal infections may occur on leaves of any age but are common on young seedlings, especially those receiving frequent overhead water. Dry weather slows the development of symptoms and spread of the disease.

Flowers. Individual buds turn black and fail to open or the entire inflorescence turns dark brown to black....

Stems. No stem infections have been observed on naturally infected plants.

### TREATMENT

Copper-containing fungicides were shown to provide some control (but) control must be based primarily on obtaining plants free of the disease and following procedures that exclude the pathogen from the growing area. Maintaining strict sanitary procedures in the production area is essential. The importance of water in disease development with *P. cichorii* was emphasized.

Lloyd drawing on his personal experience adds, "I have found no watering overhead an absolute must. Also the spray Ortho Funginex has worked well for me after heavy rains and dews. It is the same spray I use on roses for mildew."

He further comments, "Sanitation in all areas of production is very important. When I was active in the business my employees would call me 'the Hilex Kid'. I insisted on treating all surfaces of the work and growing areas with Hilex or Chlorox as well as hands, tools, knives, etc."

\* \* \* \* \*

If the soil isn't moist water your evergreens, trees and ornamental shrubs.

## VIEWS FROM THE VEGETABLE GARDEN

MGCM PRESIDENT KENT PETTERSON



### VEGETABLES FOREVER

This Month is MGCM's Annual Meeting. Please come join us at LHUMC for our introduction of the slate of officers assembled by our nominating committee led by Duane Johnson. Come to the meeting on Nov. 13th and show your support for our 1991 Club leadership. With your support and continued strong leadership we will ensure continued success for MGCM. Another big part of the success of MGCM is the continued smooth functioning of all the committees of the club. As you renew your membership, please include your choice for committee participation. Please note the addition of a new committee for the 1992 celebration of our 50th Anniversary.

The volunteer efforts that drive our clubs activities are carried on by many individuals. This month's Volunteer of the Month exemplifies the kind of member that helps make our club special. For several years, Howard Klier and his family have hosted fellow members, family and friends for making Christmas wreaths. The day after Thanksgiving is usually a time for relaxing and family activities. Howard will open up his store to provide all you need to make your own wreath. They have the work space, the materials, help to get you started, and even treats if you aren't still full of turkey. A friend of ours brought her teen age son last year. He made a wreath for their home fireplace mantle. The pleasure and satisfaction he got out of doing that for his family was wonderful to see. Do join us on the 23rd at Klier's Nursery. See details elsewhere in the Spray. This is a family event you won't want to miss.

Speaking of family events, several of us were at Lee Gilligan's on Sept. 30th to press apple cider. We had a wonderful day and everyone went home with fresh cider. New member Terry Robertson was especially good on the apple mash crank. Our thanks to Lee and his wife Rose for having us at their home.

If you haven't picked up your calendars for 1991, be sure to see Howard Berg at the next meeting. He has extras and can order more so if you haven't reserved any you can do so now. The \$2.00 price tag can't be beat.

Are any of you considering buying a mulcher for handling all your spring and fall yard debris? We bought a Mantis 'Recycler' this year. After using it for both seasons, I can strongly recommend this machine. It comes in either five or seven and a half horsepower with capacity of up to a 3" branch in the chipper chute. It also comes fitted with safety features that don't have to be removed to make the thing work. If anyone is interested I'd be glad to give a demonstration.

You will find elsewhere in the Spray our usual early announcement of our annual Christmas Party. Reservations are required. Walt Gustafson and committee have arranged an outstanding dinner highlighted by our traditional "Parade of Turkeys".

## DATES TO REMEMBER

- Nov. 3 - Dist. 7 Fall Meeting, 459-2190
- Nov. 6 - Board of Directors at K. Petterson
- Nov 13 - Reg. Meeting at LHUMC 6:00 PM
- Nov 23 - Wreath Making at H. Klier's
- Dec. 4 - Annual Christmas Party at LHUMC

GOOD GARDENING TO You,

A handwritten signature in cursive script that reads "Kent".

REMEMBER 25 NEW MEMBERS IN 1990

MGCA BOARD VOTES TO REVISE BY-LAWS---AND CONSIDERABLY MORE (from Elvin Burnell)

A survey confirmed the very strong need for changes in MGCA operations. Member clubs will be pleased to learn that the actions initiated at the Convention in Des Moines should serve to fully satisfy their complaints. The Brd. of Dir. voted unanimously:

- a) To revise the by-laws to allow individuals to vote by mail ballot for: dues changes; by-laws revisions; officer elections.  
This is achieved by direct membership in national MGCA--membership in each club would be unaffected.
- b) To re-organize the publications into a more "professional" shape; if The Gardener cannot become somewhat self-sustaining, to consider its discontinuation.
- c) To re-direct its officers/staff in a manner to ensure better service to members.
- d) To improve communications with the member clubs.
- e) To clearly spell out the missions and roles of MGCA.

The list of proposals was considerably longer, including:

- The recruitment of individuals into membership, which is to say again that MGCA becomes a direct member organization, soliciting even single members in colleges and universities (then, the individuals can be joined together to form a new club, if feasible); providing a "new-member" kit, and so on.
- The re-alignment of some regions, to strengthen them, or to provide them with better services, etc.
- Improvements in fund-raising efforts, including Grants.
- A stronger emphasis on youth gardening and other community services.
- A liaison officer in each club to foster better communications.
- To expand services to clubs and individuals, as via manuals, gardening education, etc.
- To consider corporations and their employees for membership.
- To consider the introduction of an executive director to remain "on scene" so as to bring continuity from one administration to the next.
- To generate favorable local/national publicity and improve MGCA's image.

\*\*\*\*\*

A tentative timetable projecting the changes item-by-item was submitted. Specific language will be made ready by the next Executive Meeting in Nov. covering all of the above. ALL OF THE DELEGATIONS WERE VERY PLEASED THAT THESE ACTIONS WERE TAKEN, AND LOOK FORWARD TO A RE-VITALIZATION AND MODERNIZATION OF MGCA.

--Sol Steinberg, Nat. Chr., Public Relations, Austin, July 2, 1990

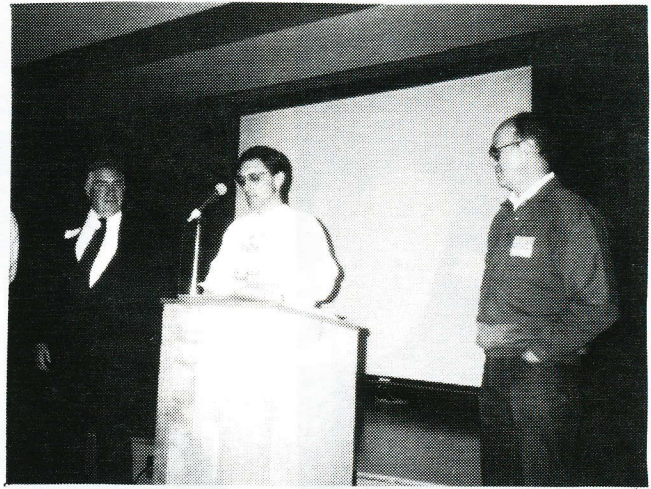
Reports credited to Elvin Burnell, MGCA Third Vice-President have been appearing in Men's Garden Club bulletins across the country ever since the 1990 MGCA convention. The above, the most detailed, came from Mansfield Ohio MGC's bulletin, The Greenhorn. Burnell is obviously going at his job with vim, vigor and vitality. To get anywhere he will need to.

Which brings us to our point. The Men's Garden Club of Minneapolis has had strong leadership, fine participation. Witness the Fragrance Garden planting in an all day rain and the summer maintenance schedule. The percentage attendance at meetings is good but not what it might be. Committee participation at times has not been all that good, either.

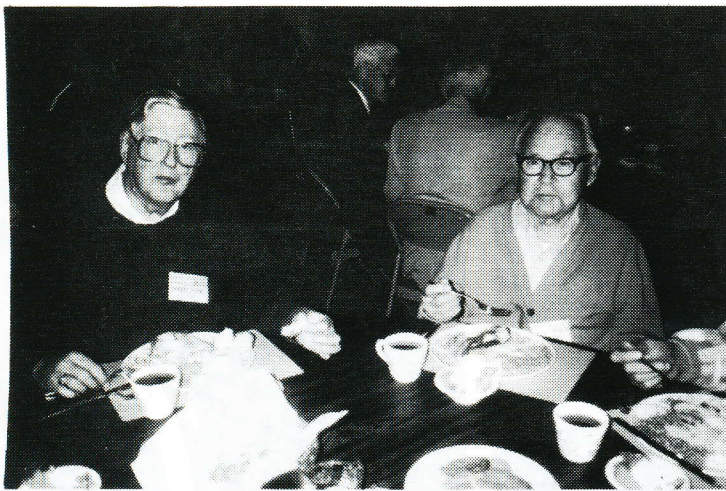
If MGCM is to continue to be a strong club we must each of us annually re-affirm our commitment. "I will support the officers and help build the Club to serve our area and our fellow gardeners." We must remember MGCM's strength will be based on the concern of each member who asks himself, "Have I done my best for the club's advancement and to encourage committee chairs to provide strong leadership in their areas of expertise?" It's up to you and me.



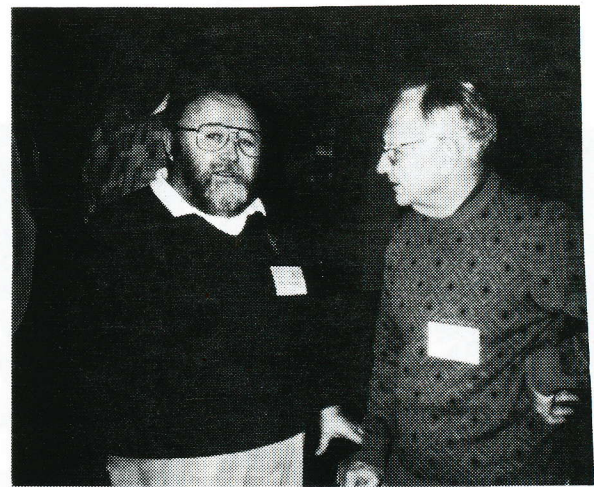
Buying Meal Tickets



New Member Induction



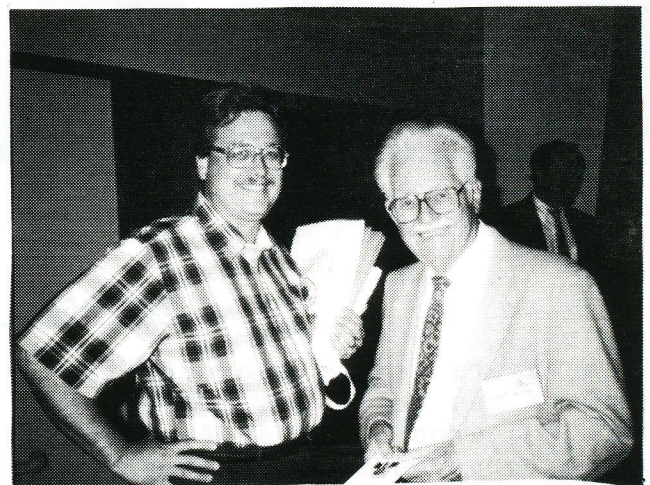
Dwight Stone - Nate Siegel



Fred Glasoe - Stan Crist



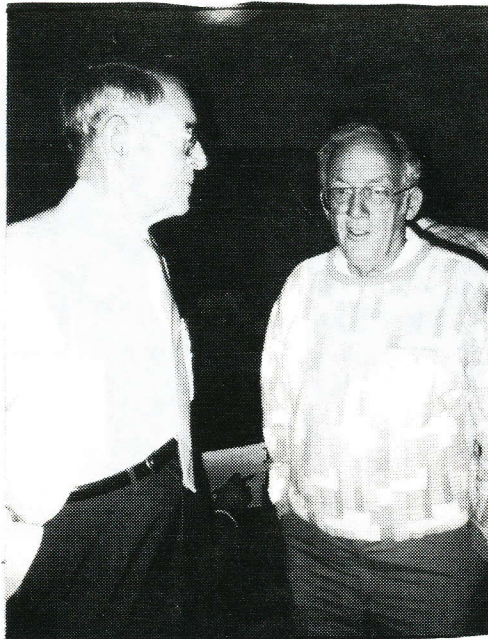
Fred Introduces Vinn and Cao Dam



Kent Petterson - Ted Olson



Stanley Skinner



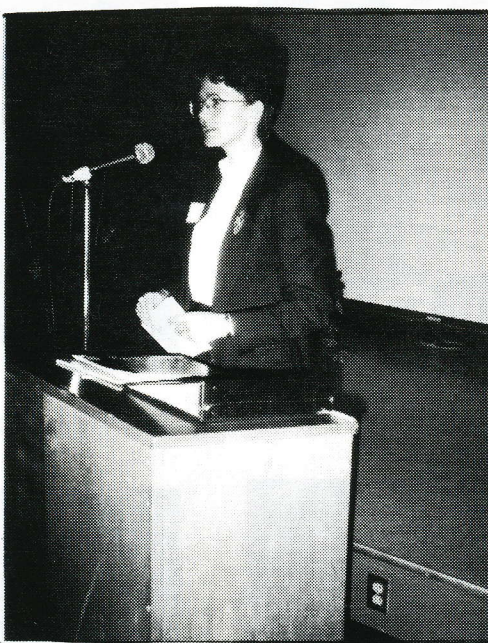
Chas. Proctor  
- Dave Johnson



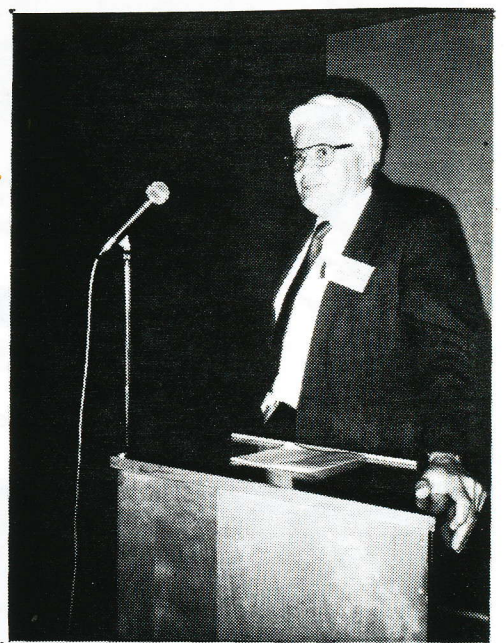
Jay Reeves



Kent



Speaker: Diane Emerson

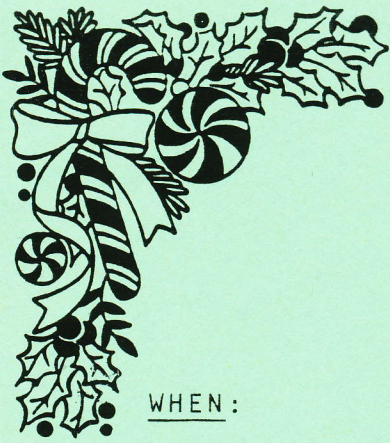


Russ Smith

GLEANINGS FROM HERE and THERE

Researchers have discovered that Aspirin apparently promotes formation of flowers and leaf buds, stimulates leaf growth and reduces water uptake. Spraying crops with an Aspirin solution can make them more resistant to drought, perhaps, experts say, because root cells are sensitive to Aspirin's active ingredients. A study in England showed that Aspirin boosted a plant's own disease-fighting capability. It helped stop the spread of a pernicious virus that causes lesions on the leaves of tobacco plants.





MGCM ANNOUNCES  
THE  
1990 CHRISTMAS PARTY

WHEN: Tuesday, December 4, 1990

WHERE: Lake Harriet United Methodist Church  
Chowen Avenue South at 49th Street  
Minneapolis, Minnesota

WHAT: Social Get Together 6:00 p.m.  
Dinner, featuring the PARADE OF TURKEYS\* 6:30 p.m.  
Entertainment: Elaine Horning, the versatile,  
talented accordionist will lead you  
in song and play your favorites.

PRICE: \$12.50 per person.

POINSETTIAS for each lady in attendance.

GIFTS\*\* The luck of the draw!

RESERVATIONS are to be in by December 1st. Complete the reservation form below. Mail it with your check to Walter Gustafson.

\*Be a carver - call Walt Gustafson and volunteer.  
\*\*As usual, we solicit your help in providing us with gifts decoratively wrapped. We are hopeful that a gift will be provided by or on behalf of each person in attendance. Call Walt Gustafson to make arrangements if gifts are to be picked up.

1990 MGCM CHRISTMAS PARTY

Names of those attending:	Member	Guest
1. _____		
2. _____		
3. _____		
4. _____		

Number attending \_\_\_\_\_ x \$12.50 = \$ \_\_\_\_\_

Mail to: Walter C. Gustafson Telephone: 926-3124  
3812 W. 57th St.  
Edina, MN 55410

