

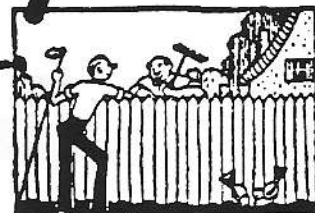


The Garden Spray

Bulletin of the Men's Garden Club of Minneapolis, Inc.

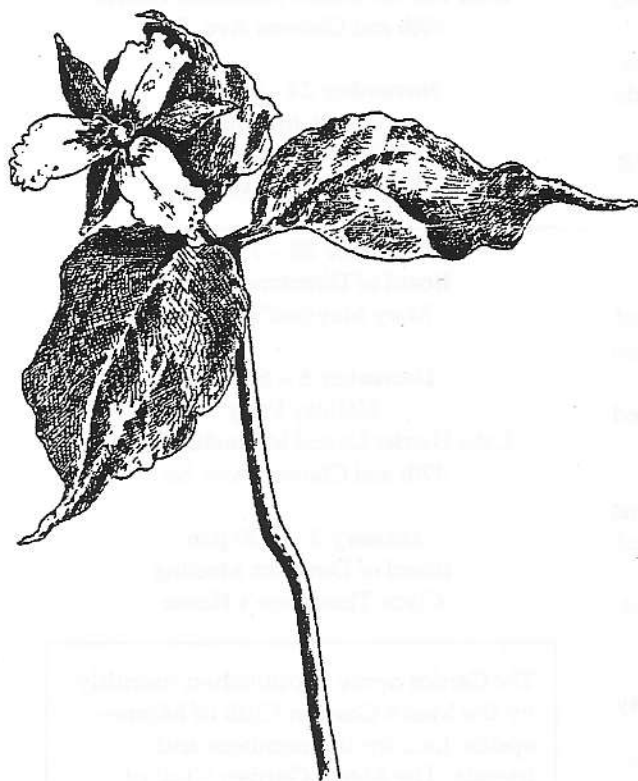
Affiliated with Gardeners of America and the Minnesota State Horticultural Society

November 1995, Volume 53, Number 11



November Dinner Meeting...

Gardening with Native Plants



Landscape designer and plantsman Greg Owens is our November dinner meeting speaker. He'll talk about ways to incorporate native—and consequently hardy—plants into the landscape.

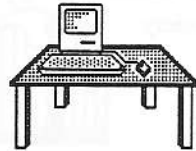
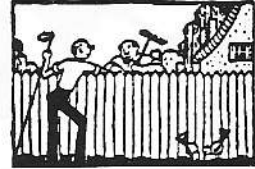
Date: Tuesday November 14

Place: Lake Harriet United Methodist Church
4901 Chown Avenue South
Minneapolis

Times: 6:30 p.m. Dinner
7:00 p.m. Business Meeting
7:30 p.m. Speaker

Cost: \$7.00 with advance reservation
\$8.00 at the door (if places are available)

The permanent reservation list is in effect for this meeting. If you received a reservation card in this issue of the *Garden Spray*, you are not on the list and must mail your card back to Secretary Mary Maynard by Friday, November 10 to be assured a place at dinner. If you are on the permanent list and will not attend, you must notify Mary by the same deadline or risk being responsible for the price of your dinner.



The Editor's Desk

Andy Marlow

I am writing this the last full week in October and still no killing freeze at my house. In fact, the geraniums in the kitchen window box are blooming as well as they have all year. Maybe it's the increased light they receive now that most of the leaves have fallen.

Cuttings have been taken and potted impatiens moved inside (for midwinter cutting), but the beds are still alive. There are fewer blooms, of course. The two beds I planted with Super Elfin coral as a test for the Enviro soil amendment are among them.

I haven't made highly scientific measurements, but it appears that the Enviro-grown plants are 10-12% taller than the control group. Over the course of the growing season, the Enviro plants also had more and larger blossoms. If you remember, one of the two adjoining raised beds have Enviro tilled in to the soil and nothing else. The other had an equal amount of composted leaves tilled in, plus a liberal dose of 10-10-10 fertilizer applied once in the spring.

The results lead me to conclude that if Enviro was available at a reasonable cost, I would use it. I will try to find out more about cost and availability and relay the information to you.

I don't often check the "party page" of *MPLS-St. Paul* magazine, but the November issue has some people you might recognize. The magazine sent their intrepid photographers to the Edina Garden Council garden tour. MGCM members Harold and Phyllis Gulde and Henry Orfield were pictured in their respective gardens.

Coming Attractions

November 7 - 7:30 p.m.
Board of Directors Meeting
Clyde Thompson's House

November 14 - 6:30 p.m.
MGCM Dinner Meeting
Lake Harriet United Methodist Church
49th and Chowen Ave. So.

November 24 - 5:30 p.m.
Wreath Making
Klier's Nursery
5901 Nicollet Ave. So.

November 28 - 7:30 p.m.
Board of Directors Meeting
Mary Maynard's House

December 5 - 6:00 p.m.
Holiday Party
Lake Harriet United Methodist Church
49th and Chowen Ave. So.

January 2 - 7:30 p.m.
Board of Directors Meeting
Clyde Thompson's House

The Garden Spray is published monthly by the Men's Garden Club of Minneapolis, Inc., for its members and friends. The Men's Garden Club of Minneapolis is a not-for-profit, equal opportunity organization.

Editor.....Andrew J. Marlow
Staff.....Ed Biren, Chuck Carlson, Dale Fisher, Mary Maynard, Derrill Pankow, Merle Pulley



Cuttings

by Bob Voigt, President, MGCM

Thanks to Henry Orfield, Kent Petterson and Andy Marlow for leading table discussions on gardening topics at the October dinner meeting. From the reports I heard, it worked out well.

At the November meeting, Harold Gulde will lead a table discussing the topic "Preparing Bulbs for Winter Storage" and Bob Livingston will lead a table on "Dwarf Conifers". These are timely issues and we are lucky to have members who will share ideas on a practical *how to* basis.

As I have read various publications recently, I have noticed several variations of gardener's prayers. I have always

known that gardening is a spiritual experience. My results, though, seem to be related more to laborious efforts and commitment of time. If you have any short examples of statements of the power of reflections, please share them with me. I'm curious.

What's in a name? I know a number of people whose name is a flower, like Rose, Daisy, Violet or Iris. That's really nice. Others have nicknames like Bud or Twig, and some not so affectionate like Hayseed, Peabrain or Potato Head. Who comes up with these associations?

One of the most generous sayings (although not initially intended the way I like it) is "flower power". I go along with the connotation that it suggests more than the environment in which it was created. I've always liked "cool as cucumber". I've thought "corny" was a disservice to a great food crop. On the other hand, being known as a "good looking tomato" is generally thought to be complimentary. How many word associations like these can you come up with? I'd like to start a collection. Let me know.

Planning is underway to provide more good club programs, activities and services during 1996. I believe we all gain from being involved and suggesting new ideas for consideration. Participation each month is increasing, and I hope it's a reflection that your board and committee members have been responding to your needs and interests. Keep the ideas coming and help keep MGCM "blooming".

Happy gardening.



President Voigt previews his Halloween costume at the October MGCM Dinner Meeting. (photo by Lloyd Wittsticok.)



Monthly Program Report

by Derrill M. Pankow

Robert Frost may have gained a bit of his immortality with the line "Good fences make good neighbors" in his poem *Mending Wall*, however I am certain all seventy some attendees at the October MGCM dinner meeting would agree with Jerry Olson, the evening's speaker, that

roses make even better neighbors.

Although elegant hybrid tea and floribunda roses continue to captivate the attention of many home gardeners, Jerry's presentation on Minnesota Winter Hardy Repeat Blooming Shrub Roses was made more enticing and thought provoking by the fact that

just a week or so after his talk came the time to begin the arduous task of burying each and every one of those popular, but fragile, hybrid teas and floribundas.

Winter hardy shrubs roses come in all shapes, sizes and colors. Most of the oldest varieties, hybridized in the late 1890s, as well as the latest varieties are readily available at many local nurseries.

The growing attractiveness of the hardy shrub rose can easily be understood when its basic characteristics and needs are considered. Shrub roses have beautiful, shiny, dark green foliage; the single or semi-double flowers are highly fragrant;

and select varieties are repeat bloomers. Nearly all colors are available.

The shrub rose can be grown in a wide variety of soils. However, when planting, sink it three or four inches deeper than its original soil line to encourage the growth of new roots. Shrub roses are not heavy feeders, but organic fertilizer is preferred to chemical fertilizers. Shrub roses are resistant to black spot, mildew and rust. The only pruning necessary is to cull out dead branches. Insect infestation is not a problem, either. Its main enemy is the common rabbit.

Winter protection is not necessary for most varieties. Even if you experience die back, new vigorous growth will come from its hardy roots. Wind chill is a greater threat to shrub roses than the severe air-temperature cold of a Minnesota winter.

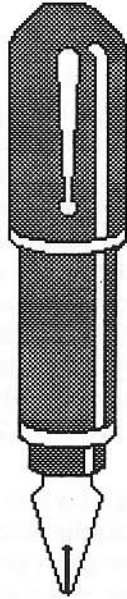
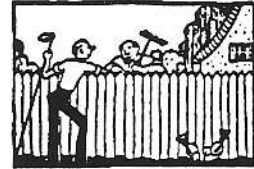
Although Jerry clearly has his hands full with five hundred roses surrounding his home and his tireless work in the rose gardens at the Arboretum, he is available at 888-4655 should you have any questions concerning the size, hardiness, and possible sources for purchasing winter hardy shrub roses next spring.



Jerry Olson
Photo by Lloyd Wittstock

MEETING INFORMATION

Here is something you can do for our meetings. We now have two easels as club property and we want to make full use of them. We will set them up at each dinner meeting for anyone to display anything you think may be of interest to the rest of the membership. Who knows, we might learn something, get a laugh, view a nice photo or find a piece of information we could use in our gardening efforts. You can even use it for a wanted notice. Use it you may like it.



Board Meeting Minutes

Mary Maynard, Secretary

September 5, 1995

Present: Howard Berg, Chuck Carlson, Bill Jepson, Mary Maynard, Henry Orfield, Bob Stepan, Clyde Thompson, Bob Voigt. Not Present: Kay Wolfe.

The meeting was called to order by Bob Voigt at 7:45 p.m.

Old Business

Secretary's Report: The minutes of the August meeting were approved on motion by Clyde Thompson, second by Chuck Carlson.

Treasurer's Report: Treasurer's report was approved as amended on motion by Clyde, second by Mary Maynard.

Tour Committee: The August tour went well.

Membership: Renewal process is beginning. MSHS needs 1996 members by December 1. The Board also discussed the need for better definition of the roles and responsibilities of the Membership Committee for 1996.

Programs: Bob Stepan has all the programs lined up for this fall.

October: Jerry Olson — shrub roses

November: Doug Owens — gardening with native plants

Community Garden: Cleanup announcement in October Spray. Herb garden designs due by October.

TGOA/MGCM Regional Director: Russ Smith has asked if we want him to continue as our Regional Director. On

motion by Howard Berg, second by Henry Orfield, the Board decided that Russ should continue to represent us.

New Business

Tour committee: This year's tours made money. Kay has suggested we use some of our "profit" for a donation to the Bakken Library, in appreciation for the special effort that the people made for us to visit. On motion by Mary, seconded by Bill Jepson, the Board voted to donate \$60 to the Bakken Library. Funded as part of Tour Expenses, not from general budget.

Holiday Party: Russ Smith has this under control.

Food, Flower and Foto Show: September vegetable show is under control. FFF needs money for a new banner. Henry will determine cost for planning in 1996.

TGOA/MGCA: The national organization is opening up membership to corporations. The Board decided not to pursue this at the local level at this time.

1996 Budget: Needs to be complete by November 1. Bob V. and Bob S. will send a letter to all committee chairs requesting budget input.

Meeting was adjourned upon motion by Chuck, second by Clyde.

October 3, 1995

Present: Howard Berg, Chuck Carlson, Henry Orfield, Bob Stepan, Clyde Thompson, Bob Voigt, Kay Wolfe. Not Present: Bill Jepson, Mary Maynard.

The meeting was called to order by Bob Voigt at 7:40 p.m.

Old Business

Secretary's Report: Postponed until November.

Treasurer's Report: Report was approved as presented on motion by Clyde, second by Chuck.

Budget issues for 1996: The \$7 price

(continued on page 7)



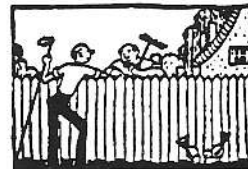
Chuck's Chestnuts

by Chuck Carlson

The Chestnut

They are here again. The new varieties never seem to stop. The biggest splash in 1995 was Rose Carpet. The 1996 AAS winners are; Petunia 'Fantasy Pink Morn', Petunia 'Heavenly Lavender' and Salvia, farinacea 'Strata'. Could one of these be the big splash of '96? Or will it be one of the following that the National Garden Bureau listed as new for 1996?

- Begonia 'Ornament' A dark leaved F1 hybrid of the Non-Stop type.
- Dianthus 'Floral Lace' An F1 hybrid with large 1-1/2 inch lacy flowers.
- Geranium 'Avanti Orange Bicolor' An F1 hybrid with large flowers and zoned foliage.
- Gomphrena 'Dwarf Gnome Mix' Heat tolerant, free flowering and good for a low border.
- Impatiens 'Showstopper' 12" tall with large flowers of apricot, rose and lavender.
- Lobelia, erinus 'Riveria Mixed' Colors are blues, white, lilac and blue-white bicolor.
- Salvia, splendens 'Sizzler Pink' A very early 12" tall plant with upright habit flowering in late spring.
- Sunflower 'Moonbright' An F1 hybrid with lemon yellow petals and is pollenless.
- Vinca 'Pacifica Mixed' Has large blooms in 6 colors. I grew the red one. An excellent plant.
- Carrot 'Healthmaster' 30% more Vitamin A. Has a 3" crown and is 10" long. Good raw or cooked.
- Corn 'Seneca Appaloosa' A super sweet



- bicolor.
- Lettuce 'Little Caesar' A romaine with heads 1/3rd normal size
- Pea 'Super Sugar Snap' Plumper pods and matures 6 days earlier than sugar snap. Has many double pods
- Pepper 'Ole' A dark green jumbo jalepeno
- Pepper 'Mandarin' A pumpkin orange European Lamuyo type, resistant to tobacco mosaic and Stripe. Stripe is a physiological ripening disorder.
- Pepper "Red Beauty' An F1 hybrid Bell pepper that grows anywhere. Matures in 68 days and turns red 2 weeks later.

The Tip

Back in August, I wrote about herbs. I incorrectly reported the amount of dried versus fresh herbs to use. I should have said: "When a recipe calls for dried herbs, use twice that amount for fresh herbs."

Holiday Wreath Making at Kliers

Howard Klier and Klier's Nursery invites MGCM members, family and friends to a holiday gathering to make wreaths and centerpieces. You may purchase supplies at Klier's. Howard and his knowledgeable staff will happily supply instructions, as well as snacks and beverages.

It takes place at Klier's, 5901 Nicollet Avenue South in Minneapolis, beginning at 5:30 p.m. on Friday November 24.

Make your holiday even happier with a wreath or centerpiece you made yourself!



Board Minutes

(continued from page 5)

for meals just barely covers the cost of caterer and church rental. We need to monitor this to see if we will need to increase meal price. Calendars are selling for \$3 each again this year — very low compared to similar calendars sold. The Board discussed increasing the price of calendars for next year and using the proceeds for plants for the Fragrance Garden, Stevens House, Arbor Day, etc.

Membership: 33 renewals in as of October 3.

Community Garden: Things went quite well this year. There is growing concern that the transients who seem to live in the park are scaring away visitors and damaging some plants.

New Business

MSHS Representative: Merle Pulley has represented us for several years, and would be willing to continue if nobody else wanted to.

Nominating Committee: Clyde will be spearheading effort to get a slate together.

Membership: Bob V. suggests that Past Presidents be in charge of membership, which means Bob has volunteered to serve as Membership Chairman for 1996!

Holiday Party: Things are on track.

Public Tour in 1996? We want to continue to give scholarships, and public tour money supports this. If we don't want to have a public tour next year, Bob V. suggested the possibility of moving some of the CD funds which are currently reserved for another National convention to the scholarship fund. A meeting will be held in early 1996 to decide whether to have a public tour.

The meeting was adjourned at 9:20 on motion by Clyde, second by Bob S.

1996 Officer Nominees

The following officer candidates have been proposed by the Nominating Committee chaired by Clyde Thompson. They will be voted on at the November MGCM Dinner Meeting:

President – Bob Sepan
Vice President – Maurice Lindblom
Secretary – Mary Maynard
Treasurer – Howard Berg
Past President – Bob Voigt
Directors – Chuck Carlson, Bill Jepson, Henry Orfield, and Kay Wolfe.

'96 Dues Due Membership Renewal Due by November 15

By now you should have received a 1996 MGCM Membership Renewal form in the mail. Please fill it out and return it, along with a check for the appropriate amount of dues, to Treasurer Howard Berg. In order to continue your Club membership in the Minnesota State Horticultural Society and your subscription to the *Minnesota Horticulturist*, we must have a list of MGCM members and a check for their MSHS dues to the Society by December 1. If you don't pay your dues on time, you won't get your *Minnesota Horticulturist* on time.

Inside:

Page 2/	Editor's Column Events Calendar
Page 3/	President's Column Meeting Notice
Page 4/	October Meeting Report
Page 5/	Board Meeting Minutes
Page 6/	Chuck's Chestnut Wreath Making at Klier's
Page 7/	1996 Officer Slate '96 Dues Due

MEN'S GARDEN CLUB OF MINNEAPOLIS, INC.

CLUB OFFICERS:

President: Bob Voigt
4934 Aldrich Ave. So., Minneapolis, MN 55409
Vice-President: Bob Stepan
7717 Riverdale Dr., Brooklyn Park, MN 55444
Secretary: Mary J. Maynard
4375 Dart Ave. So., St. Louis Park, MN 55424
Treasurer: Howard H. Berg
10107 Lakeview Dr., Minnetonka, MN 55305
Past President: Clyde Thompson
4429 Dunham Drive, Edina, MN 55435

DIRECTORS:

Chuck Carlson
1001 Hackman Circle, Fridley, MN 55432
Bill Jepson
13207 Henning Circle, Prior Lake, MN 55372
Henry Orfield
6124 York Ave. So, Edina, MN 55410
Kay Wolfe
2740 Florida Ave. So., Minneapolis, MN 55426

Return to:

The Garden Spray

Men's Garden Club of Minneapolis, Inc.
Andrew J. Marlow, Editor
10700 Minnetonka Boulevard
Hopkins, MN 55305-4404

First Class Mail

FORWARDING AND RETURN
POSTAGE GUARANTEED,
ADDRESS CORRECTION REQUESTED