



MEN'S & WOMEN'S
GARDEN CLUB
OF MINNEAPOLIS

October 2016

The Garden Spray

Vol. 74, No. 10

IN THIS ISSUE

October Meeting Preview

From the President

Membership Renewal Form

From the Editors

Holiday Party

Programs for 2017

Photo Directory

Scholarship Update

Lyndale Park/Native & Shade Gardens

Blog, blog, blog

Board Meeting Highlights

Membership Corner

Treasurer's Snapshot

Meeting & Event Calendar

2016 Officers & Directors

Coming Up

TUESDAY, OCTOBER 11

"Hydroponic Gardening" presented by MWGCM member Larry Cipolla

"Hydroponics is the easy way to garden year round. The program will focus on what hydroponic gardening is and why you should try it, and will provide an easy lesson in how to get started with hydroponics, including necessary equipment and supplies. It will also cover what you can grow indoors and outside, and the difference between hydroponics and aquaponics."

-- *Larry Cipolla*

Larry is a Hennepin County Master Gardener and a docent at the Minnesota Landscape Arboretum, and has been gardening for more than 50 years. He teaches a wide range of classes throughout the metro area, at the Arboretum, the Minnesota State Fair, and to other master gardeners and garden clubs. In addition classes on hydroponics, his beginning and advanced class topics include vegetables and herbs; container, vertical, and small space gardening; backyard composting; attracting pollinators and beneficial insects; and tomatoes.

Larry helped develop the first HCMG Learning Garden Tour with a focus on educating the public vs. just "showing" plants, and he helped start the first community garden in Edina. He's served on the State Advisory Board for three years, and as chair for two of those years, along with serving on the statewide seed trial committee. He has eight hydroponic projects with senior high-rise units in North Minneapolis, and he's involved with other master gardener projects serving schools, community organizations, and religious organizations.

Join us for what is sure to be a fascinating program.

Meeting location: Lakewood Cemetery Garden Mausoleum

Menu

6:00 Social Time
6:15 Dinner
7:00 Business Meeting
7:30 Program

Herb Roasted Chicken
Cheesy Potatoes
Salad
Pickled Beets
Apple Crisp

- Permanent reservations are in effect.
- Dinner is \$13.00.

- Reservations or cancellations are required no later than Friday, October 7.
- Email [Carole Ann Brekke](mailto:CaroleAnnBrekke@gmail.com), or call (952) 435-6029.
- For last-minute cancellations, call Alan Gallaher at (952) 933-1713. If he can sell it, you won't be billed.

From the President

Judy Brooke

In the spring, I always look forward to the summer garden tours, and in September I'm eager to learn new stuff from our program presenters. At our recent meeting, presenter Lynn Steiner did a great job of kicking off the fall programs with her presentation on growing native plants in a home landscape. The Tomato Tasting prior to dinner was a bonus, well received by the attendees.



MEMBERSHIP RENEWAL: Fall also means membership renewal time. At the October 11 and November 8 meetings, membership committee volunteers will eagerly await your renewal forms with your check or cash. Dues remain \$20.

To renew your membership:

- Print the form below and bring it to the meeting, or use this link to get a printable version: [Membership Renewal Form](#)
- Or pick up a renewal form at the October or November club meetings.
- Return your form at a meeting or mail with your dues to Judy Brooke at the address on the form.

New members who joined after July, will have their membership automatically renewed for 2017. **We would love to have all renewals completed by November 8**, so we can have the 2017 Directory ready by January.

JOIN A COMMITTEE: Committee involvement is one of the best ways to get to know members and feel a part of the club. It's also vital to the health of the club. There are approximately 15 committees to choose from. You'll find them listed on the renewal application and in your club directory along with the names of the committee members. If you'd like to know more about the function of each committee, an information sheet will be available at the renewal table.

Enjoy the upcoming dinner programs, renew your membership and join at least one committee. Those three things will be a win-win for you and for the MWGCM.

Happy gardening!

Membership Renewal Form

Membership Renewal Form
Men's and Women's Garden Club of Minneapolis
Membership January 1, 2017 through December 31, 2017

Annual dues are \$20.00. Make your check payable to **MWGCM** and bring with you to the October 11 or November 8 club meetings. You can also mail this form to Judy Brooke, 3640 Wooddale Ave S #209, St Louis Park MN 55416.

If you wish to make an additional donation to the Club, make your check payable to MWGCM or add the amount to your dues check and indicate the fund below:

General _____ Scholarship _____ Lyndale Park Gardens _____

Name: _____ **Spouse/Partner** _____

Home phone: _____ **Cell:** _____ **Work:** _____

Email address: _____

Please print clearly

Committees: I am currently serving on, or am willing to serve on, the following committees:

<input type="checkbox"/> Arbor Day	<input type="checkbox"/> Hospitality	<input type="checkbox"/> Marketing/Publicity	<input type="checkbox"/> Programs
<input type="checkbox"/> Awards/Trophies	<input type="checkbox"/> Lyndale Park Garden	<input type="checkbox"/> Membership	<input type="checkbox"/> Scholarship
<input type="checkbox"/> Flower /Veg Show FFF	<input type="checkbox"/> Mixed Border Garden	<input type="checkbox"/> Photography	<input type="checkbox"/> Sunshine
<input type="checkbox"/> GardenSpray Newsletter	<input type="checkbox"/> LyndaleParkGarden/	<input type="checkbox"/> Plant Sale/Auction	<input type="checkbox"/> Tours/Club
<input type="checkbox"/> Holiday Party	<input type="checkbox"/> Native Garden		<input type="checkbox"/> Tours/Public

What would you most like to learn about?

My gardening interests are:

Other horticultural affiliations: _____

I am a Master Gardener: yes no

Other experience/knowledge that could help the club (please circle): writing, accounting/financial, computer skills, public relations/marketing, leadership, fundraising, legal, public speaking, other: _____ -

I am willing to be listed as a mentor gardener in the club directory for (enter specific gardening topic/s such as: perennials, roses, propagation...):

Only complete if your address has changed

Address: _____

City: _____ **State:** _____ **Zip Code:** _____

08/31/2016

The other day I had a bit of good news/bad news. First the good news: a friend gave a large number of huge hosta plants for my garden. Now the bad news: a friend gave me a large number of huge hosta plants for my garden.

Last year in a President's Note I complained about having plants to get in the ground very late in the season. This year is no different. I still have a few shrubs that I acquired during end-of-season clearance sales sitting in pots in my garden. So why I said yes to taking on an additional large planting project at this time year, when I have a long list of other outdoor tasks to complete before winter arrives, I really can't say.

On second thought, I know exactly why I did it. First of all, they're FREE. Secondly, hostas are very easy to plant. Third, I'm using them basically as ground cover to fill in a hard-to-garden hillside in my yard, so this is a great opportunity to cover a large, steep slope fast. And I did exercise some restraint; I only took half of the plants she had dug out -- the rest went to the MSHS Minnesota Green program for public space gardens.

In any case, after this weekend I'll know if I my decision to take these plants was foolish or fabulous. Here's hoping you get everything done in your garden this fall.

--Tom McKusick

Today we said good-bye to the native and shade gardens at Lyndale Park for the winter. It was a bittersweet moment when we realized we wouldn't be gathering each week to plant, mulch, weed and plan--not to mention enjoying home-baked treats (bribes?) supplied by Kirky. It's not that we'll necessarily miss schlepping huge barrels of mulch or fighting off mosquitos. But we will miss the excitement of seeing what's changed--identifying a plant we hadn't noticed before, admiring the blue gentian that bloomed and left too quickly. A lot will happen between now and spring, but we won't be there each week to see it.



However, we will meet once a month over coffee to plan for the coming year and continue to learn from each other. Although we've only been at it two years, we've already formed friendships that have deep roots.

Before we left, we marveled at the appearance of two hummingbirds and a monarch who apparently hadn't gotten the memo to head south. Or maybe they didn't want to leave the garden either.

-- Nancy Felice

Holiday Party

Larry Larson, Chair

SAVE THE DATE! HOLIDAY PARTY SET FOR TUESDAY, DECEMBER 13

Hello everyone! This year's holiday party, set for Tuesday evening, December 13, is right around the corner so please put a big red circle on your calendar to save the date for this very special event. Once again, the party will take place at Embassy Suites, 2800 American Blvd. West, Bloomington. It is located right off 494 and Penn Avenue south.

The party begins at 6 p.m. with a social hour and a chance to check out the silent auction items. The dinner will begin at 7 p.m. For all you new members, this is a "can't-miss" event. All of our club's major awards will be announced during the evening.

Next month's *Spray* will contain all the details as well as a form to fill out and mail to me if you are planning on attending.



Programs Committee

Tom McKusick, Chair

PROGRAM CALENDAR FOR 2017

The Programs Committee has finalized the schedule of presentations at our regular meetings in 2017. I'm grateful to everyone who contributed ideas and contacted presenters.

January 10

Mark Armstead, "Growing Fruits and Vegetables in Pots"
Lake Harriet United Methodist Church

February 14

Kathy Zuzek, "Pruning Essentials for Landscape Shrubs"
Lake Harriet United Methodist Church

March 14

Dean Herzfeld, "Best Practices for Garden Pest Management"
Lakewood Cemetery Garden Mausoleum

June 13

Rhonda Fleming Hayes, "Pollinator Friendly Gardening"
Lakewood Cemetery Garden Mausoleum

September 12

"Ask the Experts: Answers to All Your Gardening Questions"
Lakewood Cemetery Garden Mausoleum

October 10

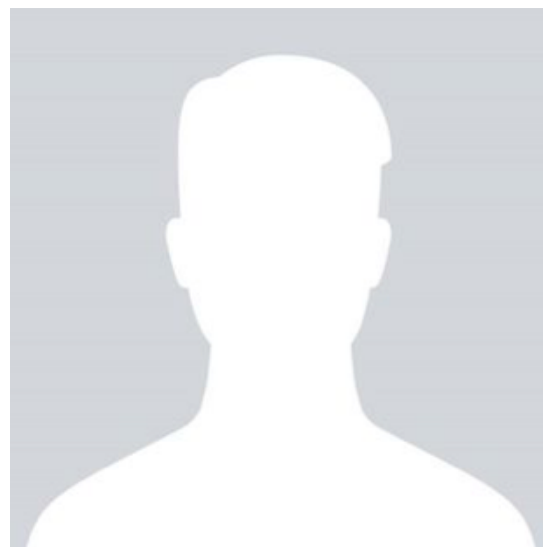
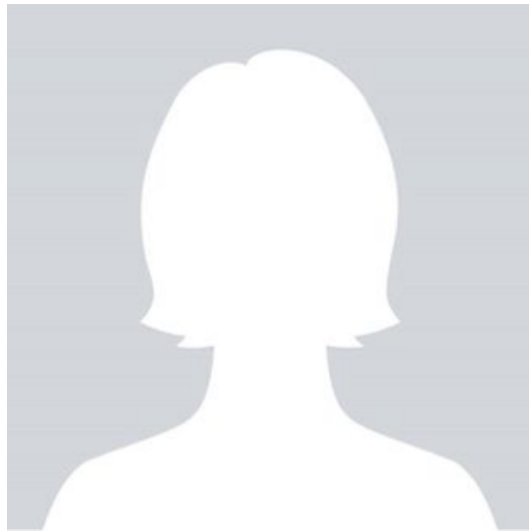
Jeremy Moore, "Using Dwarf and Miniature Conifers in the Garden"
Lakewood Cemetery Garden Mausoleum

November 14

Henry Fieldseth, "Behind the Scenes at the Friends School Plant Sale"
Lake Harriet United Methodist Church

Photo Directory Update

Andy Marlow



Our new online photo directory is nearing completion, but there are still some members' photos missing. Below is a list of those I do not have. I will be taking photos at the October meeting and plan to have the directory posted on our website by the

end of October. If you prefer, you may send me a photo (a head shot, shoulders and up), either digitally or a print. If I cannot obtain your photo or you prefer not to be pictured, you will be in the directory with a blank silhouette as shown here.

To protect members' privacy, the directory will include only your photo and name--no addresses, phone numbers, etc. And only MWGCM members will have access to the directory on our website.

Send photos to ajmarlow@comcast.net or Andy Marlow, 10700 Minnetonka Blvd, Hopkins, MN 55305-4404.

The members whose photo I do not have are:

Brenny, Len	Lindblom, Maurice
Cipolla, Larry	Livingston, Bob
Cooke, John	Malooly, Tim
Docksen, Don	Mangel, Sandra
Empson, James	Maynard, Maleah
Fenton, Bette	McKee, Jim
Galles, Nancy	Paquin, Sue
Gawboy, Andrew	Petterson, Kent
Greene, Andrea	Poskozim, Elaine
Hagen, Tami	Rooney, Theresa
Hanson, Mary Lee	Rust, Denise
Hegion, Ada	Schuh, Sara
Heiberg, Robert	Sims, John
Helebrant, Mary Catherine	Smoczyk, Eric
Hibberd, Margaret	Soli, Kristi
Hoks, Harry	Spiegel, Elaine
Johannes, Kathy	Tapp, John
Johnson, Delores	Tomko, Zan
Johnson, Jan	Untiedt, Don
Johnson, Nona	Vandierendonck, Diane
Karasov, Shayne	Wolfe, Kay
Langfield, Janet	Yeats, Jane
Levin, Laurie	

MWGCM Scholarship Committee

M.T. Pulley, Chair

SCHOLARSHIP UPDATE

Minnesota universities and technical colleges with horticulture departments have received the MWGCM 2016 Scholarship Announcement and application information.

So far, 75% of the schools have acknowledged receiving the information and will inform students of the MWGCM scholarship opportunities.

If you are interested in serving on the Scholarship Committee, email M.T. Pulley: rustydebris@yahoo.com.

Lyndale Park/Native & Shade Gardens

Kirky Otto, Carol Scheier, Chairs

IN THE NATIVE AND SHADE GARDENS THIS FALL



Photo by Kathy Lenarz

Join us in delighting in this lovely toad lily (at least we think it's a toad lily) which Mary Helebrant, a new member to our native garden group recently discovered tucked under a ninebark shrub. Kathy Lenarz took some wonderful photos of it so we can all enjoy it. It's native to Japan, not to Minnesota, so we'll move it from the native garden side of the path in Lyndale Park to the shade garden side. It's clearly happy under a shrub, but we'll try to find a place that's protected from the sun but close to the path so that people strolling by can see it, too.

In case you didn't know about the shade garden, it's the same place we've been referring to as the "transitional area," because it transitions from the Mixed Border Garden to the east and the Native Garden to the west. However, it really is a shade garden, since it's behind huge white pines, and so we've agreed to use that name for it. The same people work on it (under the direction of Carol Schreier) as work in the native garden, so we're trying to find an umbrella name for the area -- maybe we should go back to what the Park Board originally called it? That was "Hummingbird Garden" -- but that name seems to have been dropped in favor of the broader term

they're using now: "Pollinator Garden."

More proof that the gardens are always changing!

-- Kirky Otto

Blog, Blog, Blog

REMEMBER THE LAZY GARDENER

Have you been following the MWGCM Lazy Gardener on our website? Every once in a while, Mary Maynard comes up with a new blog post. Her most recent post talks about fall cleanup and how to minimize it (but sadly, not how to avoid it completely).

DO YOU HAVE A GARDEN BLOG YOU'D LIKE TO SHARE WITH THE CLUB?

Send a link to spray@mwgcm.org and we'll be happy to spread the word.

Board Meeting Highlights

Laurie Levin, Recording Secretary

SEPTEMBER 2016 BOARD MEETING HIGHLIGHTS

After lively conversation was had at the September Board meeting we agreed that:

- Discussion regarding how to spend the Deane Funds will be tabled until the 2017 Board of Directors is in place. The new board is charged with determining how to renew a Deane Fund Committee and continue conversation regarding using the funds.
- A member of the Holiday Party committee will be found to act as a co-chair for this year's event.
- We will continue to have options on our membership renewal form allowing members to donate to the Lyndale Park Garden Fund, Scholarship Fund or the General Fund.

Members are strongly encouraged to vote in our nation's national elections before coming to the November 8 membership meeting at Lakewood.

Complete minutes are always available. Email [Laurie Levin](mailto:Laurie.Levin@mwgcm.org), or call (763) 542-8037.

WELCOME THESE NEW MEMBERS

CAROLYN BRUE



Carolyn moved to her south Minneapolis home in January. She had Sunnyside Gardens redo the beds, and has native grasses interspersed with perennials such as black-eyed Susan, coneflower and clematis. At her cabin, Carolyn has been designing a native environment appropriate for the landscape and one that does not require much maintenance. She has one of Lynn Steiner's books and very much enjoyed Lynn's presentation at our last meeting. Carolyn joined our club after searching online and finding our website. She is an in-house attorney for Cargill and has been with them for 23 years.

-- Judy Brooke

JOHN COOKE

John learned about us when attending this year's FFF show at the Arboretum. Not long after that he left on vacation that included the Pocono Mountains in Pennsylvania, the Jersey shore, and Niagara Falls where he became engaged to his long-time love, Donna Ronning. John's home is in St. Louis Park and Donna's is just ten blocks away. Eight years ago, John planted a couple dahlias in his yard. Since then the number of dahlias has increased to 80! Recently, he developed an interest in lilies and is growing up to ten different varieties. John joined our club to learn and have fun with other gardeners.

-- Judy Brooke

DOUGLAS AND CAROLYN JARRETT

Douglas and Carolyn are new to the Twin Cities having moved from Michigan in May to be closer to their son. They are retired but lead active lives walking every day. Carolyn volunteers at the Lyndale Gardens Peace Garden, and that is where one of our members spoke to her about our club. "We have always loved gardening and have had large flower and vegetable gardens in Michigan. Our daughter often comments on how our good health was influenced by all the home-grown, fresh veggies we enjoyed, with no pesticides." Carolyn canned and froze much of her crop so they were able to enjoy them year round. Now they live in a apartment and are

growing a things like cherry tomatoes in pots on their balcony. They do intend to look for a garden plot where they can resume gardening on a larger scale. They look forward to meeting and getting to know our members.

-- *Sandra Mangel*

ANNE-ELLEN KERR

Anne-Ellen Kerr has lived in her south Minneapolis home for more than 20 years. In the backyard she grows plants and vegetables. In the front she has native plants along the boulevard and a fence with climbing roses. Anne-Ellen recently retired so now has more time for gardening. She's learned about us when attending our Flower, Food and Foto Show in August and looks forward to visiting with our gardeners. Her other gardening affiliations are the Minnesota State Horticultural Society and the Minnesota Landscape Arboretum.



-- *Judy Brooke*

EVERY MEMBER BRING A MEMBER

Treasurer's Snapshot

Alan Gallaher, Treasurer

AS OF SEPTEMBER 27, 2016

Checking Balance	\$23,721*
Designated Funds	
Lyndale Park/Mixed Border Garden	\$ 3,108
Scholarship	\$ 3,796
Deane Fund at RCU [see below]	
Working Balance	\$16,817
Petty Cash	\$ 100*
MWGCM 19-month CD at US Bank	\$ 5,282*
Deane Fund at Royal Credit Union	\$64,725*
General savings \$ 5	
Money market \$19,537	

18 month CD \$20,059
30 month CD \$25,124

Total Club Assets [sum of * amounts] **\$93,828**

Meeting & Event Calendar

October 11

Hydroponic Gardening
Larry Cipolla
Lakewood Cemetery

December 13

Holiday Party
Embassy Suites
Bloomington

November 8

Low Maintenance Lawn Care
Sam Bauer
Lake Harriet Methodist Church

2016 Officers & Directors

Club Officers

President

Judy Brooke
St. Louis Park

Vice President

Board shares responsibilities

Membership Secretary

Judy Brooke

Recording Secretary

Laurie Levin
Golden Valley

Treasurer

Alan Gallaher
Edina

Directors

Judy Berglund
Minnetonka

Bonnie Haehn
Minneapolis

Dave McKeen
St. Louis Park

Steve Shubick
St. Paul

Past President

Tom McKusick
Minneapolis

The Garden Spray is published monthly by the Men's and Women's Garden Club of Minneapolis, Inc. for its members. The Men's and Women's Garden Club of Minneapolis is a not-for-profit, equal opportunity organization.



Copyright © 2016. All Rights Reserved.

