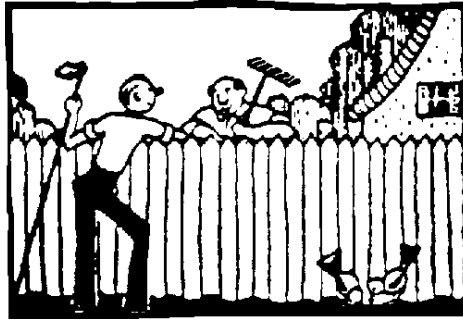


Men's Garden Club of Minneapolis

www.minneapolismensgardenclub.org



We have ribbons and trophies
galore for you to win at the

Flower, Food, and Foto Show

at

The University of Minnesota
Landscape Arboretum

August 21 & 22, 2010

Saturday 12:30 - 4:30

Sunday 10:30 - 4:30

Welcome to the Men’s Garden Club of Minneapolis (MGCM) annual Flower, Food and Foto Show. Competition is conducted in horticultural and photographic achievement. This schedule outlines the rules for exhibiting plant materials.

Contents:

How to Enter, General Rules.....	page 4
Awards and Ribbons	page 5
Design Division.....	page 6
Educational, Horticultural Divisions	page 7
Section A Annuals.....	page 8
Section B Perennials.....	page 9
Section C Roses.....	page 10
Section D Bulbs, Corms & Tubers.....	page 11
Section E Potted Plants.....	page 12
Section F Vegetables	page 13
Section G Fruits	page 14

Any interested person is invited to enter the MGCM Flower, Food and Foto Show on August 21 & 22 at the Minnesota Landscape Arboretum. Entries will be accepted between 7:00 a.m. and 10:30 a.m. on August 21 at the Arboretum. Judging will be between 10:30 a.m. and 12:30 p.m. The show will be open to the public between 12:30 and 4:30 p.m. on Saturday, August 21, and between 10:30 a.m. and 4:30 p.m. on Sunday, August 22.

Getting There

The Minnesota Landscape Arboretum is located in Chaska on Minnesota Highway 5, one half-mile west of Minnesota Highway 41. The show takes place in the MacMillan Auditorium in the Oswald Visitor Center. You may unload in the area at loading dock on the north end of the Oswald Visitor Center. Do not park in this area. Park in the public parking lots.

How to Enter

1. Choose the flower and/or vegetables you want to exhibit.
 2. Carefully check the schedule of entries, pay attention to the number of specimens needed.
 3. Check in with the registration clerk and sign up for an exhibitor number.
 4. Prepare your material for display and fill out an entry tag. See page 15 for entry tag details.
 5. Put your entry on the display table near the number of the appropriate class.
 6. Wait until the judging is over and come back to count up your ribbons.
 7. If you have questions call Judy Berglund (952-975-1960), show committee chair.
2. MGCM will be awarding a few special ribbons and trophies to its members. To be eligible for these awards, an exhibitor must be a member in good standing of the club and must register with the garden club and receive an entry number. In addition to club awards, members are eligible for nonmember awards.
 3. MGCM will provide staging items, (i.e. bottles, paper plates, etc.) for horticultural entries.
 4. Only 1 entry in each design class per exhibitor, but multiple entries in horticulture are acceptable providing each is a different named variety, shape or color.
 5. Entry tags must be filled out for each entry. Include the name of specimen, if possible, plus the exhibitor's name and address.

General Rules

1. Anyone may enter this flower and vegetable show as an exhibitor and compete for ribbons and prizes.
6. All possible care will be given to the entries, but the Men's Garden Club of Minneapolis and the management of the Minnesota Landscape Arboretum disclaim any

liability for loss or damage to private property or specimens entered.

7. Horticultural entries must have been grown by the exhibitor.
8. Entries **must** be removed from the show floor after 4:30 p.m., Sunday, August 22.
9. The Minnesota State Horticultural Society *Exhibiting and Judging Handbook* 1998 edition governs the scoring of show entries.

Awards & Ribbons

The following ribbons will be awarded at the judges discretion:

First Place - Blue Ribbon
Second Place - Red Ribbon
Third Place - White Ribbon

Each blue ribbon in the Horticultural Division counts 3 points toward the sweepstakes awards, each red ribbon counts 2 points, and each white ribbon counts 1 point.

Each blue ribbon in the Design and Educational Divisions counts 6 points toward the sweepstakes award, each red ribbon counts 4 points, and each white ribbon counts 2 points.

Special awards will be presented for outstanding exhibits.

Champion and Reserve Champion ribbons will be awarded for both flower and vegetable division winners. (Champion means best in each division.)

The following will be awarded only to MGCM members:

2010 Special Awards

- Vegetable - Herbs
- Flower - Dahlia

Albert R. Blackburn Trophy

Flower Sweepstakes

Tom Foley Memorial Trophy

Vegetable Sweepstakes

Robert L. Smith Memorial Trophy

Best showing by a First-time Exhibitor

The following will each be awarded a Rosette Ribbon:

- Best of Show Flower Division
- Sweepstakes Flower Division
- Best of Show Vegetable Division
- Sweepstakes Vegetable Division
- Best of Show Photography Division

The Grand Champion (*Best of Show*) of the 2010 MGCM Flower and Vegetable Show will be selected from Horticultural Division entries. This award is open to all exhibitors and consists of a Rosette Ribbon.



Remember: Read your schedule carefully. The schedule is the law of the show!

Design Division

Rules for Design Division

All Design Division classes will be divided into advanced and amateur groups.

Advanced – Open to all

Amateur – Open to all who have won 5 or fewer first place awards in the design division of a flower show.

1. Designs (arrangements) must be the work of the exhibitor.
2. All fresh plant materials must be garden grown. Non-commercial house plant foliage is permitted.
3. Artificial flowers, fruits, vegetables and foliage are not permitted.
4. Accessories and supplementary plant materials will be permitted in all design classes.
5. Foliage, seeds, berries, fruits, weeds, grasses, and other natural plant parts will be considered supplementary plant materials.
6. Cut vegetables or fruit will not be allowed, except where explicitly specified.

Theme: Minnesota Festivals

Minnesota festivals throughout the year.

Classes

1. *We(e) Fest*, miniature arrangement less than 6" x 6" x 6"
2. *Aquatennial* arrangement with visible water
3. *State Fair*, warm or hot colors
4. *Winter Carnival*, cool colors
5. *Taste of Minnesota*, incorporating fruits, vegetables or other edibles
6. *Octoberfest*, using a recycled container, preferably beer related

Educational Division

Horticultural exhibits of an educational nature regarding a technique or aspect of horticulture are encouraged. Please contact Judy Berglund, 952-945-1960, to register in advance.

Horticultural Division

Horticultural Division Rules

1. Entries must be grown and prepared by the exhibitor.
2. An exhibitor may enter more than one horticultural specimen in a single class, provided each entry is a different named variety.
3. Potted plants must have been in the possession of the exhibitor for at least three (3) months.
4. Classes will be divided if the number of entries warrant division due to quantity, type of species or size of item submitted.
5. MGCM will furnish clear glass pint and quart size bottles.
6. Very small glass vases are available for staging miniature roses or other small flowers.
7. Only correctly named specimens will be considered for top awards. Correct names on all specimens are desired.
8. Awards will be made on the merits of the entries and, if in any classes

there are no entries worthy of awards, the judges may withhold awards.

9. Questions not covered by these rules will be determined by the show cochairs.
10. Foliage must be attached to stems of all cut flower exhibits unless the flower is grown on the stem (hibiscus, tuberous begonia).
11. Exhibitors are requested not to enter crops which are out of season.

Section A Annuals Classes

1. Ageratum (1 spray)
2. Amaranthus (1 stem)
3. Aster (3 blooms)
4. Bachelor Buttons (3 blooms)
5. Begonia (fibrous) (3 sprays)
6. Celosia
 - A. Crested (1 spike)
 - B. Plumed (1 stem)
7. Cleome (1 stem)
8. Coleus
 - A. Normal (3 stems)
 - B. Giant (1 stems)
9. Cosmos
 - A. Bipinnatus single flower (3 blooms)

- B. Bipinnatus double flower (3 blooms)
 - C. Sulphurous (yellow to red/orange) (1 spray)
 - D. Other cosmos
10. Dianthus (3 sprays)
 11. Foliage
 - A. 3 leaves
 - B. 1 stem
 12. Gomphrena (3 stems)
 13. Grasses (3 stems)
 14. Helianthus (Sunflower) (1 stem)
 15. Impatiens (1 stem)
 16. Lisianthus (1 stem)
 17. Marigolds
 - A. Large, over 3" (3 blooms)
 - B. Medium, 2-3" (1 spray)
 - C. Dwarf, under 2" (1 spray)
 18. Nicotiana (3 stems)
 19. Petunia
 - A. Double (3 sprays)
 - B. Single (3 sprays)
 20. Rudbeckia (3 blooms)
 21. Salvia (3 stems)
 22. Snapdragon (3 spikes)
 - A. Dwarf, under 12"
 - B. Tall
 23. Statice (1 stem)
 24. Verbena (3 sprays)
 25. Vinca (3 stems)
 26. Vines (1 specimen)
 27. Viola (Pansy and Viola) (3 stems)

28. Zinnia
 1. Small, 0.5 to 2" (3 blooms)
 2. Medium, 2.5 to 4" (1 bloom)
 3. Giant, over 4" (1 bloom)
29. Any other annual not listed
 - A. Large (1 specimen)
 - B. Small (3 specimens)
14. Eupatorium (Joe Pye Weed) (1 stem)
15. Gaillardia (Blanket Flower) (3 blooms)
16. Geranium (1 stem)
17. Grasses
 - A. 3 blooms
 - B. 3 stems
18. Helenium (1 stem)
19. Heliopsis (False Sunflower) (3 blooms)
20. Hemerocallis (Daylily) (1 stem)

Section B Perennials Classes

1. Achillea (Yarrow) (3 stems)
2. Agastach (Anise Hyssop) (3 stems)
3. Aster (3 stems)
4. Astilbe (1 stem)
5. Campanula (Bellflower)
 - A. Small (3 blooms)
 - B. Large (3 stems)
6. Centaurea (Cornflower) (3 blooms)
7. Chrysanthemum (3 stems)
8. Coreopsis
9. Delphinium (1 spike)
10. Dianthus (Pinks) (3 stems)
11. Digitalis (Foxglove) (1 spike)
12. Echinacea (Coneflower) (3 blooms)
13. Echinops (Globe Thistle) (1 branch)
21. Hibiscus (1 bloom)
22. Hosta (measurement at width of leaves)
 - A. Leaves under 2" (miniature) (3 leaves)
 - B. Leaves 2" to 4" – solid color (3 leaves)
 - C. Leaves 2" to 4" – variegated (3 leaves)
 - D. Leaves 4" - 8" – solid color (1 leaf)
 - E. Leaves 4" to 8" – variegated (1 leaf)
 - F. Leaves larger than 8" – solid or variegated (1 leaf)
23. Leucanthemum x superbum (Shasta Daisy) (3 blooms)
24. Liatris (Kansas Gay Feather) (3 spikes)
25. Limonium latifolium (Sea Lavender) (1 stem)

26. Malva (Musk Mallow)
(1 stalk)
27. Monarda (Bee Balm)
(3 blooms)
28. Nepeta (Catmint) (3
stems)
29. Perovskia (Russian Sage)
(1 spike)
30. Phlox (1 stem)
31. Physostegia (Obedient
Plant) (1 spike)
32. Platycodon (Balloon
Flower) (1 stem)
33. Rudbeckia (3 blooms)
34. Salvia (Meadow Sage) (3
spikes)
35. Scabiosa (Pincushion
Flower) (3 blooms)
36. Sedum (Stonecrop)
A. Small (3 stems)
B. Large (1 stem)
37. Thalictrum (Meadow
Rue) (1 stalk)
38. Tradescantia (Spiderwort)
(1 stem)
39. Veronica (Speedwell)
(3 spikes)
40. Any Other Perennial not
listed
A. Large (1 stem)
B. Small (3 stems)
41. Foliage
A. Small (3 leaves)
B. Large (1 leaf)
C. 1 stem
42. Vine (1 branch)
43. Shrub (1 branch)

Section C Classes

Roses

1. Hybrid Tea or Grandi-
flora (1 bloom per stem,
no side buds)
A. White and near white
B. Yellow
C. Orange
D. Pink
E. Red
F. Mauve
G. Any other
2. Hybrid Tea or Grandi-
flora (1 spray*)
3. Floribunda
A. 1 bloom per stem, no
side buds
B. 1 spray*
4. Polyantha (1 spray*)
5. Miniature (1 bloom per
stem, no side buds)
A. White and near white
B. Yellow
C. Orange
D. Pink
E. Red
F. Mauve
G. Any other
6. Miniature (1 spray*)
7. Climber
A. 1 bloom per stem, no
side buds
B. 1 spray*
8. Old Garden Roses (1
bloom per stem, with or
without side buds)
9. Shrub Roses (1 spray*)

10. David Austin-style English Shrub Roses (1 spray*)

11. Any other type of rose not listed (1 specimen)

* **Sprays should have at least two blossoms open.**

Section D Bulbs, Corms, & Tubers Classes

1. Allium (Decorative onions) (3 stems)
2. Begonia, Tuberous (1 bloom)
3. Caladium (1 leaf)
4. Calla (1 bloom)
5. Cannas (1 bloom)
6. Dahlias (1 bloom each)
 - A. Pompon, under 2"
 - B. Miniature, 4" or less
 - C. Ball, 2" to 4"
 - D. Ball, over 4"
 - E. Cactus, straight (florets straight, uniform, radiate from center)
 - F. Cactus, semi (florets straight or incurved, reflex toward stem)
 - G. Cactus, incurved (florets pointed and curved toward face)
 - H. Lacinated (florets split at tip)
 - I. Collarette (single row of florets on flat plane)

J AA or A, Decorative or Informal
Decorative 8" or larger

K.. BB, Decorative or Informal Decorative 4" to 8"

L Waterlily

M. Other (Novelty, Mignon, Orchid, etc.)

Formal varieties petals are flat, even and regular over the face of the flower. Informal varieties petals are rolled at their tips.

7. Gladiolus
 - A. Small under 31/2" (1 spike) (100, 200)
 - B. Over 31/2" (1 spike) (300, 400, 500)
8. Liliium, Orienpet (1 stem)
9. Liliium, Oriental (1 stem)
10. Liliium, species (Lily) (1 stem)
11. Any other (1 specimen)

Section E Potted Plants Classes

1. African Violet
2. Any other gesneriad
3. Begonia
4. Oxalis
5. Any other foliage plant
6. Ivy
7. Pothos or Philodendron
8. Ferns

9. Hoya
10. Orchid
11. Any other succulents
12. Euphorbia
13. Sansevieria
14. Peperomia
15. Aloe
16. Any Crassula
17. Haworthia
18. Any other cacti
19. Any other large, usually 5" or more in diameter or 10" more in height
20. Any other small, usually less than 5" in diameter or less than 10" in height

Container Grown Patio Plants

(Will be divided by pot size under 14" & over 14" depending on entries)

21. Begonia, fibrous
22. Begonia, tuberous
23. Begonia, Other
24. Geranium (Pelargonium)
25. Coleus
26. Fuchsia
27. Impatiens
28. Other

Collection of Plants

29. Collection of 3 or more cacti or succulents. Either one pot per plant or all in one container.
30. Collection of 3 or more

foliage or flowering plants, one plant per container.

31. Collection of three or more foliage or flowering plants, all in one container.

Hanging Baskets

32. Foliage
33. Blooming

Artistic Arrangement of Plants

34. Bonsai
35. Dish Garden
36. Planter
37. Terrarium

Section F Vegetables Classes

1. Beans, bush (7)
 - A. wax
 - B. green
 - C. purple
 - D. lima
 - E. shell (fresh or dry in pods)
2. Beans, pole (7)
 - A. wax
 - B. green
 - C. purple
 - D. lima
 - E. shell (fresh or dry in pods)
3. Beets (3)
4. Broccoli (1)

5. Cabbage (1)
6. Cauliflower (1)
7. Cantaloupe (1)
8. Carrots (3)
 - A. long, tapered
 - B. short
 - C. finger
9. Corn, sweet (3)
10. Cucumber
 - A. slicing (3)
 - B. pickling (7)
11. Eggplant
 - A. regular (1)
 - B. small (3)
12. Gourds
 - A. large (1)
 - B. small (3)
13. Kohlrabi (3)
14. Lettuce (1 plant)
15. Onion (3)
 - A. yellow
 - B. red
 - C. white
 - D. other
16. Parsnip (3)
17. Peas (6 pods)
18. Peppers
 - A. large (3)
 - B. small (7)
19. Potatoes (3)
 - A. white
 - B. red
 - C. other
20. Pumpkin (1)
21. Radish (bunch of 5)
22. Spinach (1 plant)
23. Squash
 - A. Summer (3)
 - B. Winter (1)
24. Swiss Chard (2 leaves)
25. Tomatoes
 - A. Small, 3 to 6 oz each (3 examples)
 - B. Medium, 6 to 13 oz each (3 examples)
 - C. Large over 13 oz (3 examples) (refer to class #34)
26. Tomatoes, Tiny
 - A. Current, pea size (7 examples)
 - B. Grape, under 2 oz, under 2" (7 examples)
 - C. Cherry, under 2 oz, under 2" (7 examples)
 - D. Other, over 2 oz, under 3 oz (7 examples)
27. Turnip (3)
28. Watermelon (1)
29. Any other vegetable at edible stage, small (3)
30. Any other vegetable at edible stage, large (1)
31. Any vegetable growing in a container
32. Any vegetable growing in a hanging basket
33. Largest Tomato
34. Largest vegetable
 - A. non leafy
 - B. leafy
35. Herbs – all one variety – 3 stems in one bottle

36. Herb Collection – 5 different named varieties, each in a separate bottle.
37. Herbs – one or more growing in a container.

Section G Fruits

Class

1. Apples (3 fruits)
2. Strawberries (1 pint)
3. Raspberries (1 pint)
4. Any other ripe fruit (3)
5. Any other ripe berrylike fruit (1 pint)

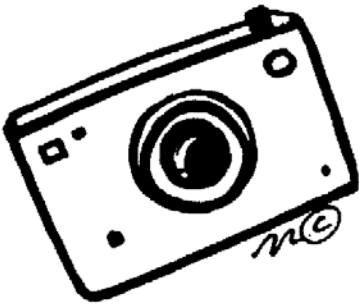


Foto Division

Rules for this division were distributed separately. To obtain a copy of the show schedule, call Chuck Carlson at 763-571-0463 or Lloyd Wittstock at 612-623-7735.

Filling Out an Entry Tag

The diagram shows a rectangular entry tag form with a horizontal fold line near the bottom. The form is filled out with the following text:

O
ENTRY TAG

No.13.....

DivisionHort.....

ClassA - 17C.....

Entry ...Marigold

.....'Tiger Eyes'

Name ...Mary Maynard

Address St. Louis Park

Below the fold line, there is a blank rectangular area.

Surrounding the form are six callout boxes with arrows pointing to specific parts of the form:

- Top Left:** Use a ball-point pen, lead pencil or waterproof marker to fill out tag. Tags often get wet, and other markers may run or fade.
- Top Right:** Your entry number. You get your number the day of the show.
- Middle Right:** Either "Design" or "Horticultural", often shortened to "Hort"
- Bottom Right (top):** The Section Letter and Class number from the Show Schedule.
- Bottom Right (middle):** The variety name of your entry as best you know it.
- Bottom Right (bottom):** Pre-printed address labels work very well for this. Saves time!
- Bottom Left:** Fold Line: End of tag is folded up over name so judges don't see it.



Minnesota Landscape Arboretum
3675 Arboretum Drive
P.O. Box 39
Chaska, MN 55317-9613